

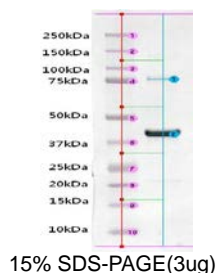
DATA SHEET

Product Information

Product Name	: Cytoplasmic Transduction Peptide-Recombinant Human Prostatic acid phosphatase (CTP-rhPAP)
Synonyms	PAP, TMPase, PAPf39, <i>ACPP</i>
Description	CTP (Cytoplasmic Transduction peptide) has not only excellent transcellular efficiency, but also a strong tendency to remain in the cytoplasm after transduction without migrating into the nucleus. When cells are treated with CTP-conjugated proteins, they immediately penetrate into cells. Prostate acid phosphatase is an enzyme produced by the prostate. It may be found in increased amounts in men who have prostate cancer or other diseases. The highest levels of acid phosphatase are found in metastasized prostate cancer. Certain medications can cause temporary increases or decreases in acid phosphatase levels. PSAP was used to monitor and assess progression of prostate cancer until the introduction of prostate specific antigen (PSA), which has now largely displaced it (Ref. Wikipedia)
NCBI Accession No.	: NM_001099.4
Amino acid sequence	: MYGRRARRRRR KELKFVTLVFRHGDRSPIDTFPTDPIKSSWPQFGQLTQLGMEQHYELGEYIRKRYRKFNLNESYKHEQVYIRSTDVDRITLMSAMTNLAALFPPEGVSIWNPILLWQPIPVHTVPLSEDLQLLYLPFRNCPRFQELESETLKSEEFQKRLHYPKDFIATL GKLSGLHGQDLFGIWSKVYDPLYCESVHNFTLP SWATEDTMTKLRLELSLLSLLYGIHKQKEKSRLQGGVLVNEILNHNMKRATQIPSYKKLIMYSAHDTTVSGLQMALDVYNGLLPPYASCHLTELTYFEKGEYFVEMYRNETQHEPYPLMLPGCSPSCPLERFAELVGPVIPQDWSTECMTTNSHQGTEDSTDLE HHHHHH
Protein Tags	: Polyhistidine
Source	: <i>E. coli</i> .
Cat. No.	: A-PC03
Storage	: Should be at ≤ -70 °C as undiluted aliquots of handy size. Avoid repeated freezing and thawing.

Quality Control

Test items	Specifications
Appearance	: Clear, colorless liquid
Formulation	: 10mM Tris, 50mM Glycine, 10% Glycerol (pH 8.0-9.0) without preservative or carrier proteins.
Stability	: Stable for up to 12 months at -70 °C.
Molecular Mass	: 43.67 kDa
Specificity	: Using Western blot, detection
Purity	: Greater than 95 % by SDS-PAGE
Concentration	: Determined by Bradford method
Endotoxin	: Less than 1.0 EU/ μ g as determined by the LAL method
Sterility	: Sterilized through a 0.2 μ m membrane filter and packaged aseptically. Culture for 2 weeks, no growth



Manufacturer : **JW CreaGene Inc.**
 FL2, Jungang induspia V, 138-6, Sangdaewon-dong, Jungwon-gu, Seongnam-si, Gyeonggi-do, South Korea (462-120)
 Tel: 82-31-737-3310, Fax: 82-31-737-3301